

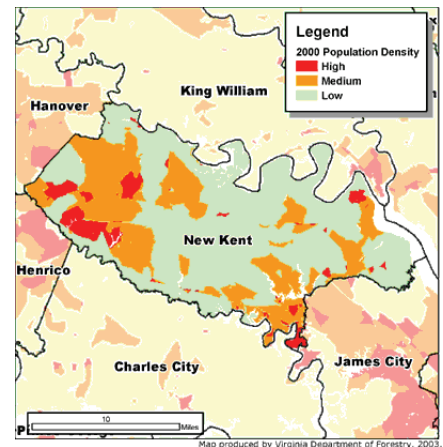
Building Boom heading towards New Kent County, Virginia

By Elaine VonCannon

New Kent County's rural scenery and serenity coupled with its proximity to Richmond and another historic town, Williamsburg, make it perfectly situated for retirement and investment. New Kent County is also the home of Martha Washington, wife of George Washington and one of our founding mothers. There are many notable historic sites in New Kent County to visit, and one of the oldest Native American reservations, inhabited by the Mattaponi, is located here.

Brickshire Golf Community

In *Retirement* magazine readers voted Brickshire Golf Community as the best place to retire. It has all of the amenities retirees have come to expect from an exclusive community. The Brickshire features an 18 hole Curtis Strange Signature Golf Course. Retire to the Brickshire in Virginia and enjoy the Owners' Clubhouse and fitness center with a swimming and tennis complex, miles of walking trails and direct access to an Equestrian Center. With home sites that begin in the 60s, the Brickshire is a great deal for investment buyers and retirees alike.



Colonial Downs Racetrack

For the horse racing enthusiast, New Kent County is home to Colonial Downs Racetrack, a significant contributor to the 1 billion dollar horse industry in Virginia. This contemporary complex offers luxurious sky seating to groups and box and field seating to race enthusiasts. The extended Thoroughbred racing season now runs from mid-June through August. Harness racing is open for wagering from September through November.

Easy Commute Between Newport News & Richmond

New Kent County is 212 square miles and is bounded to the north by the Pamunkey and York Rivers, and the Chichominy River to the south. It is only 15 miles to downtown Richmond, and 45 miles to Newport News.

A Mix of Rural Serenity and Urban Convenience

For those who wish to retire in Virginia, New Kent County can provide the right mix of peace and quiet and urban convenience to keep life interesting. With working farms in the surrounding area, a pleasant slow paced environment permeates the area. Bounded by scenic borders such as the Chichominy, York and Pamunkey Rivers, New Kent is a place of natural beauty. Scattered along the river are authentic and replicated colonial plantation homes that testify to New Kent County's enduring quality of attractiveness to the colonial settler and the modern day retiree.



ELAINE VONCANNON
 RE/MAX CAPITAL
 1176 JAMESTOWN ROAD SUITE A
 WILLIAMSBURG, VIRGINIA 23185
 (757) 564-1557 OFFICE
 (757) 564-0885 FAX
 (757) 288-4685 DIRECT LINE
 WWW.VONCANNONREALESTATE.COM
 VONCANNONREALESTATE@COX.NET



One Hour Tomato Planting

Source: Home and Garden Television

Materials You Will Need:

Shovel
tomato plants
newspaper
shredded bark or mulch
tomato cages
several large rocks

- 1 Dig holes in the spaces where the tomatoes will be planted.
- 2 Remove the lower leaves along the stem of the tomato plant, then plant the stem so that only the top leaves are showing. This will stimulate the growth of the roots.
- 3 Place thick pads of newspaper around the plants to prevent weed problems.
- 4 Weight down the paper with rocks to keep it in place, then cover the entire area with mulch. Secure tomato cages around each plant to help support the heavy branches when they mature.
- 5 Use large rocks to anchor the cages in place.

A tomato patch is a great way to try out several different varieties of tomatoes, and it couldn't be easier to plant.



Chicken Pasta Salad

from www.cooks.com

3 Chicken Breasts
2 cups Rotini or Shell Pasta (cooked, rinsed and cooled)
1/2 Red Pepper
1/2 Green Pepper
8-10 cherry tomatoes (halved)
1/4 cup Feta cheese crumbled (optional)
1/4 Caesar Salad Dressing (more or less to taste and to coat)

Directions:

Cook chicken until no longer pink in middle. Chop into small pieces. Chop peppers and add to tomatoes in large bowl. Add chicken, pasta and feta to large bowl. Add Caesar salad dressing and mix well. Refrigerate until needed.